

STROBE-BRIK™

14W LED Fire Cube Multi-use DMX-controlled LED fixture

Finally! What you have been asking for!

The powerful and compact Fire Cube may be configured as a strobe, mini-wall washer or fiber optic illuminator. Optical and mounting options make the system suitable for club, special effect, or architectural applications. The Fire Cube uses high quality Luxeon Rebel LEDs, providing some of the highest efficacies available.

Applications

- Icon architecture
- Casinos
- Theme park attraction and effect lighting
- Fiber optic applications

Features

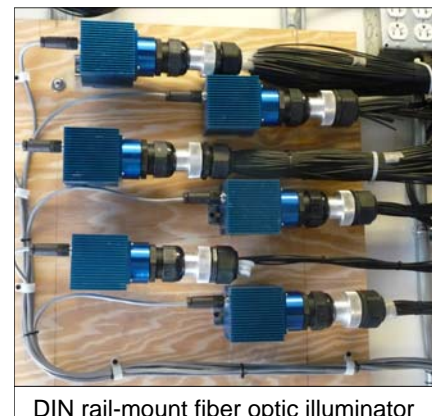
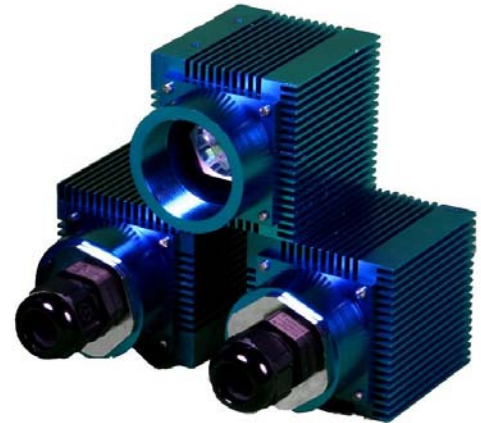
- For use with 14W LED Brik-32 and Brik-16 controllers.
- Provides strobe and continuous-duty effects.
- Individually DMX-addressed for complete control.
- Solid aluminum integrated heat sink.
- Many mounting options available.

Available colors

- FC1.0-RED, Red
- FC1.0-GRN, Green
- FC1.0-BLU, Royal Blue
- FC1.0-CYA, Cyan
- FC1.0-RED-AMB, Red-Orange
- FC1.0-AMB, Amber
- FC1.0-CWH, Cool White
- FC1.0-NWH, Neutral White
- FC1.0-WWH, Warm White
- FC1.0-RGGB, Red/Green/Green/Blue
- FC1.0-RGBA, Red/Green/Blue/Amber
- Custom color-mixed LED configurations available.

Specifications

- 14W @1000mA
- 3" X 3" X 3" cube
- One DMX address per single-color strobe, four addresses per RGB strobe.
- 50,000 hrs life at 700mA with 70% lumen maintenance.



STROBE-BRIK™

14W LED Fire Cube Multi-use DMX-controlled LED fixture

| Part Number | Type | Watts @1000mA | Luminous Flux [Lm] @ 700 mA | Dominant Wavelength [nm] @ 350 mA |
|---------------|---------------|------------------|-----------------------------------|---|
| FC1.0-RED | RED | 13.6 | 340 | 620-645 |
| FC1.0-GRN | GREEN | 14.4 | 580 | 520-550 |
| FC1.0-BLU | ROYAL BLUE | 14.4 | 2100mW | 440-460 |
| FC1.0-CYA | CYAN | 14.4 | 520 | 490-520 |
| FC1.0-RED-AMB | RED-ORANGE | 13.6 | 400 | 613-620 |
| FC1.0-AMB | AMBER | 13.6 | 260 | 584-597 |
| FC1.0-CWH | COOL WHITE | 14.4 | 580 | 4500-10000 K |
| FC1.0-NWH | NEUTRAL WHITE | 14.4 | 580 | 3500-4500 K |
| FC1.0-WWH | WARM WHITE | 14.4 | 440 | 2670-3500 K |
| FC1.0-RGGB | RGGB | 14.2 | | |
| FC1.0-RGBA | RGBA | 14.0 | | |

Type

- F - for use with fiber optics
- L - for use as a strobe or light fixture

Color

See chart above

Optics

- When used with fiber
 - 10 - No lens
 - 11 - 10° collimator/mixer
- When used as a light fixture
 - 21 - 15° collimator/mixer
 - 22 - 22° collimator/mixer
 - 23 - 32° collimator/mixer

Fiber adapters

- 0 - when used as a light fixture
- 1 - PG-16
- 2 - PG-21
- 3 - PG-29
- 4 - PG-36

Mounting

- 0 - None
- 1 - Wall mounting kit, includes four L-brackets
- 2 - DIN Rail mount, includes one spring-loaded DIN Rail adapter
- 3 - Truss mount kit, Micro, includes alum clamp for 3/8" to 1" dia pipe and yoke
- 4 - Truss mount kit, Mini, includes alum clamp for 1/2" to 2" dia pipe and yoke
- 5 - Channel mount kit, Uni-bolt, includes one adjustable channel adapter for Unistrut or Kindorf 1 5/8" square channel

Example part number

FC1.0-F-AMB-11-3-3
Fiber optic illuminator, amber, 10° collimator/mixer, PG-29 fiber adapter, Micro truss mount kit.